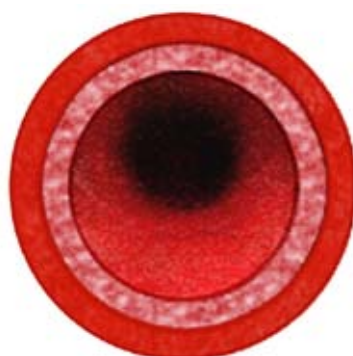


Smoking and diabetes

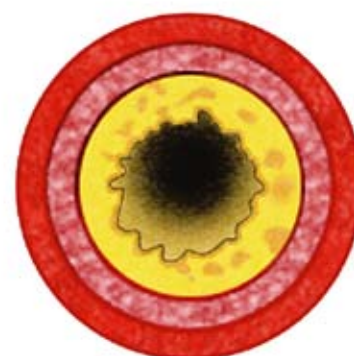
Smoking is very common in Aboriginal communities and Torres Strait Islander communities and causes more deaths and sickness in these communities than alcohol.

Smoking and diabetes

- Diabetes affects your heart and blood vessels.
- Smoking also affects your heart and blood vessels.
- If you have diabetes and you smoke, the risk of heart disease, stroke and losing limbs is increased even more.
- If you stop smoking, your risk reduces.



Inside the blood vessel of a non-smoker without any blockages.



Inside the blood vessel of a smoker showing blockages.

What are the effects of smoking?

Smoking can lead to fat sticking to your blood vessel walls (a process called atherosclerosis). This slowly blocks the blood vessels that take oxygen to the heart muscle and other parts of the body.

Smoking causes heart and lung diseases, the two biggest killers in Aboriginal and Torres Strait Islander communities.

You are three times more likely to have a heart attack if you smoke.

Tobacco smoke also contains over 4,000 chemicals and more than 60 of these are known to cause cancer in people.

There is no 'low risk' level of smoking. Each cigarette you smoke is doing you damage.

Why quitting the smokes is good for you and your Mob

- Quitting the smokes is the best thing you can do to improve your health. By quitting you greatly reduce your chance of developing cancer, heart disease, stroke and lung disease.

- Becoming a non-smoker will reduce your chance of impotence (difficulty with erections) for men, and difficulty falling pregnant, premature births, small babies and miscarriage for women.



Australian
Diabetes
Council

Smoking and diabetes

- If you are a smoker and you have children, quitting smoking means you will lower your children's risk of Sudden Infant Death Syndrome (SIDS), ear infections, allergies, asthma, bronchitis and other lung problems, and reduce the chance they will take up smoking later in life.

Where do I go to quit?

- Your local doctor or GP can give you support and refer you to other places to help you.
- Your local Aboriginal Medical Service or Health Worker can also help you.
- The Quitline provides counselling over the phone. You can ring this number at any time.

Tips for successfully quitting the smokes

- Get medical assistance from your local doctor, Aboriginal Medical Service or Health Worker. This can add to your support network and help you reduce or give up the smokes.

Being prepared can be the key to successfully quitting smoking, so having a quit plan is a good idea.

How smoking damages your body

Stroke

Mouth cancer

Lung cancer/Emphysema/Bronchitis

Heart disease

Stomach cancer

Kidney cancer

Bladder cancer

Infertility/Impotence

Cancers of the cervix, ovary and uterus

Blocked arteries and peripheral vascular disease

Weakened bones

Complications in the lower limbs (e.g. amputations). Watch for signs or symptoms like numbness or your feet changing colour.

Here are some key things to consider:

- Set a realistic date to quit by
- Plan how to deal with triggers
- Ask friends and family to support you as you give up the smokes
- Create smoke free zones
- Plan how to deal with cravings (think of something to do when you feel most like having a smoke)
- Reduce caffeine intake
- Plan to limit alcohol
- Plan some rewards

Call the
Quitline 137 848

As well as medical assistance from your local doctor, Aboriginal Medical Service and support from your family and friends, the Quitline can also provide support when you decide to quit smoking.



"Hands on Country"

This painting was created for Australian Diabetes Council by artist Chris Tobin, a Dharug man, and a traditional custodian in the Blue Mountains region. In the artist's words: "The central part of this painting represents the relationship of the clan - it's a unity of people looking out for each other while living independent lives."

Need more information?
Call our customer care line on

1300 DIABETES
1300 342 238



Diabetes Australia - New South Wales
t/a Australian Diabetes Council

ABN 84 001 363 766 CHARITY NO. CFN12458

STREET ADDRESS
26 Arundel Street
Glebe NSW 2037

POSTAL ADDRESS
GPO Box 9824
Sydney NSW 2001

Copyright ©2010 Australian Diabetes Council

CUSTOMER CARE LINE
1300 DIABETES
1300 342 238

FAX
+61 2 9660 3633
australiandiabetescouncil.com

a shared
voice
FOR DIABETES