



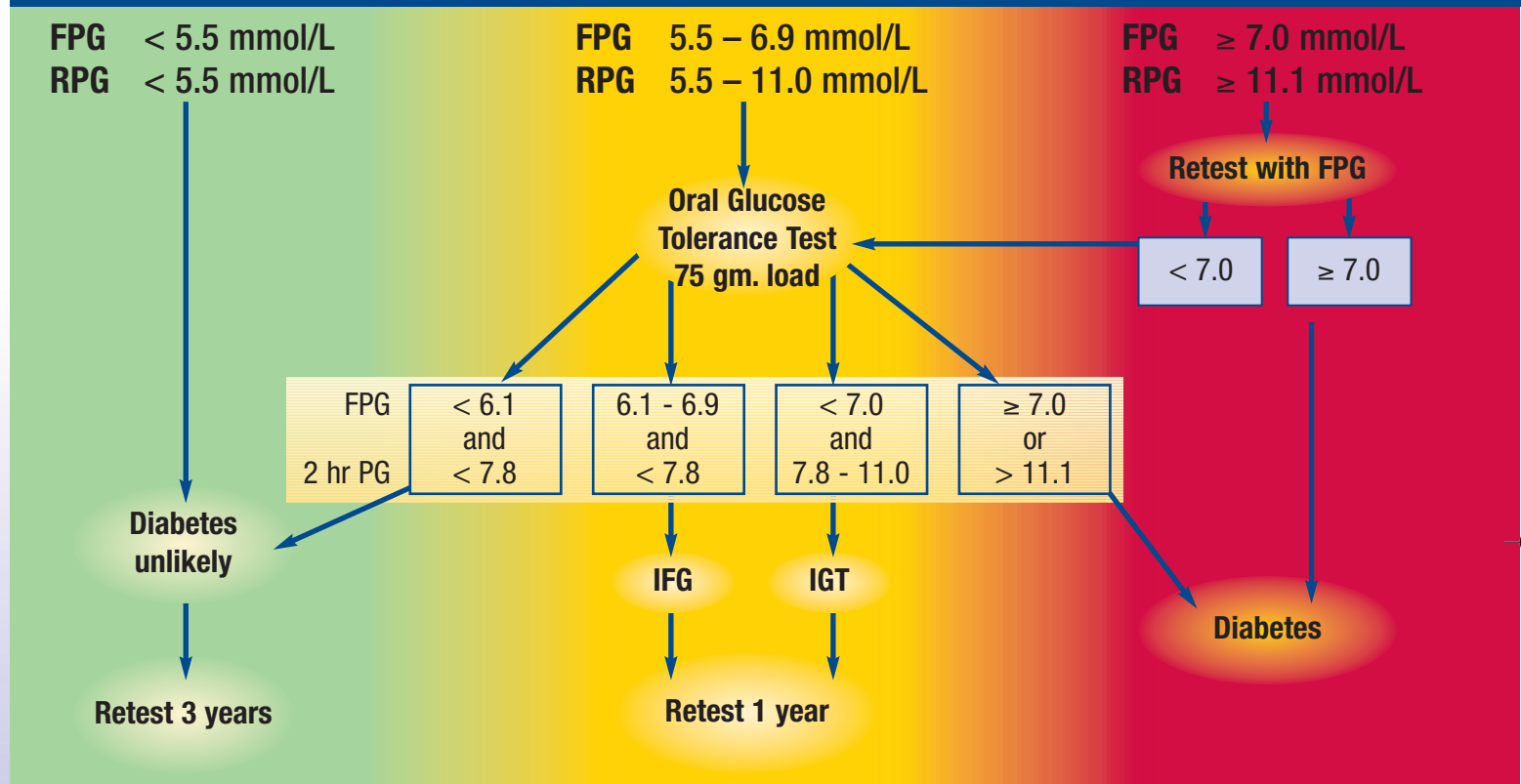
## Type 2 Diabetes Guidelines

Case detection and diagnosis information for people at risk

www.diabetesaustralia.com.au  
1300 136 588



### INITIAL TEST: Diagnosis must always be made on Venous Plasma in a laboratory



<p><b>Diabetes Mellitus</b></p> <p>Fasting ≥ 7.0 or 2-hour post glucose load ≥ 11.1*</p>	<p><b>IFG</b> (Impaired Fasting Glucose)</p> <p>Fasting ≥ 6.1 and &lt; 7.0 and 2-hour post glucose load &lt; 7.8* (if measured)</p>	<p><b>IGT</b> (Impaired Glucose Tolerance)</p> <p>Fasting &lt; 7.0 and 2-hour post glucose load ≥ 7.8 and ≤ 11.1*</p>
--	---	---

\*National evidence-based guidelines endorsed by NHMRC

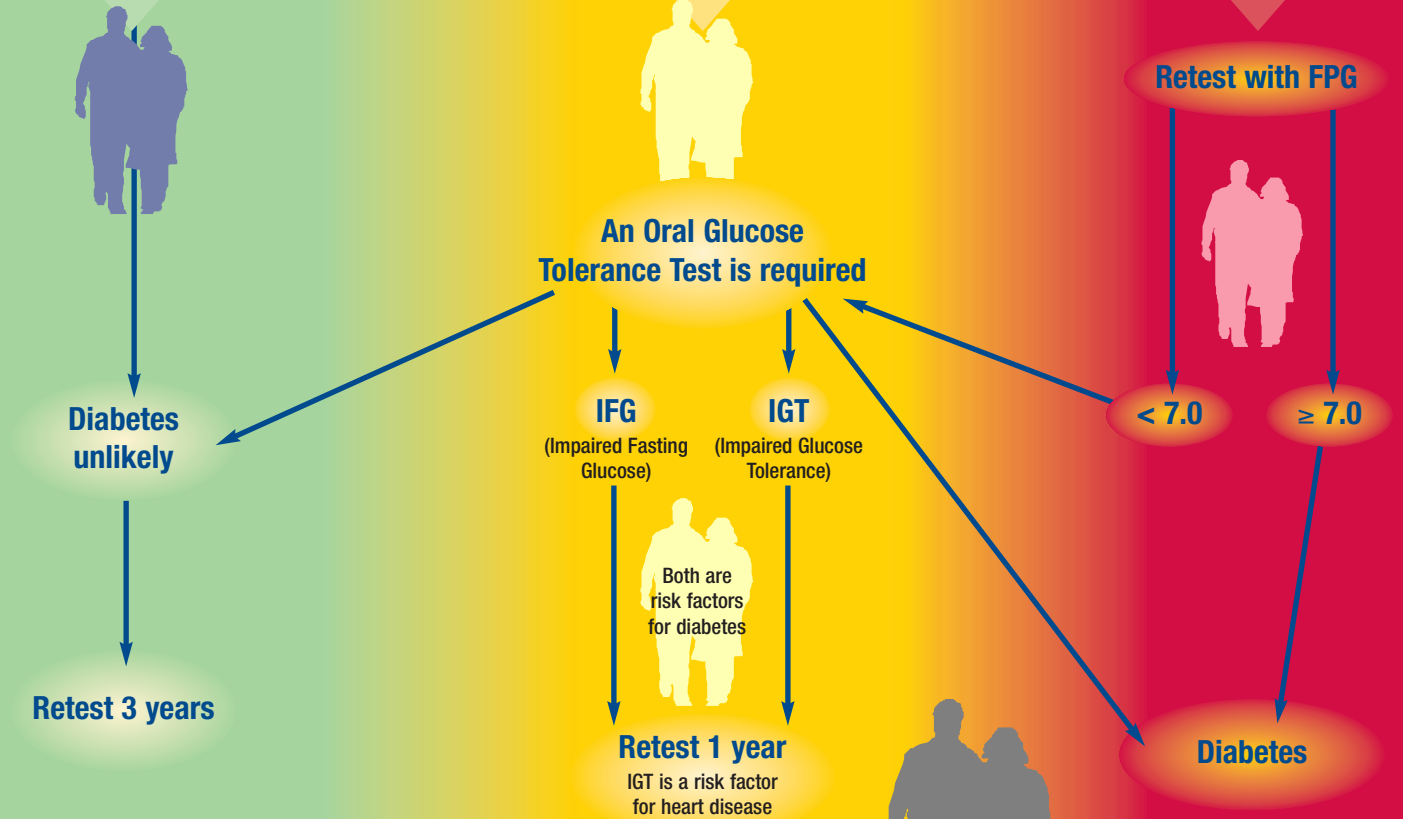
FPG – fasting plasma glucose RPG – random plasma glucose IFG – impaired fasting glucose  
IGT – impaired glucose tolerance PG – plasma glucose

## INITIAL TEST: Diagnosis must always be made on Venous Plasma in a laboratory

Fasting or Random  
Less than 5.5

Fasting: if between 5.5 – 6.9  
Random: if between 5.5 – 11.0

Fasting: 7.0 and over  
Random: 11.1 and over



## Type 2 Diabetes Patient advice guidelines

Case detection  
and diagnosis  
information for  
people at risk

[www.diabetesaustralia.com.au](http://www.diabetesaustralia.com.au)  
1300 136 588

